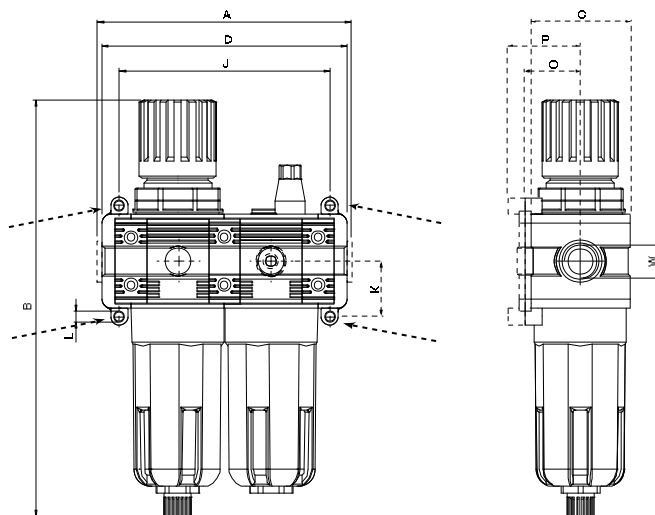
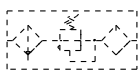


Filter Regulator and Lubricator sets

3.7

page 8



Main features

Filter regulator

Rolling membrane regulation valve with secondary air bleed, admission pressure compensation, without intrinsic consumption, with detend-stop adjusting knob, condensate collector with filter cartridge, filter element 20 µm – others on request, please refer to page 3.14 – semi-automatic condensate discharge.

Lubricator

Direct-proportional lubricator, recommended types of oil: Mineral oils of viscosity class VG 22 a (ISO 3448).
Recommended consumption: 1-2 drops / m³ air.

Technical information

Operating pressure in p1: Max. 15 bar at 20° C
 Operating pressure out p2: 0 bar ... 12 bar, others on request
 Operating medium: Compressed air
 Operating temperature: -10° C ... + 50° C
 Installation positioning: Vertical
 Materials: Body and Shell: Technopolymer
 Gaskets: NBR
 Filter: Sintered bronze
 End parts: Die-cast zinc

Pressure gauge (included in delivery):
 Accuracy class: 1,6
 Diameter: 40 mm
 Connecting thread: G 1/8 "
 Indicator range: 0 ... 12 bar

	FRL-1	FRL-2	FRL-3
A	129	159	180
B	198	244,5	273
C	45	59	70
D	119	144	171*
J	124,5	152	174
K	17,25	22	27
L	D X M4	D X M5	D X M6
W	(1/8")-1/4"-3/8" (1/4")-3/8"-1/2" 1/2"-3/4"-1"		

*) Variante G1" plus 5 mm

Family	Port Size	Flow Rate qnN*	Bowl Capacity	Drain	Part Number
1	G 1/4 "	1100 l/min	22 cm ³	Semi-auto	FRL-1-1/4
1	G 3/8"	1100 l/min	22 cm ³	Semi-auto	FRL-1-3/8
2	G 3/8"	2500 l/min	46 cm ³	Semi-auto	FRL-2-3/8
2	G 1/2"	2500 l/min	46 cm ³	Semi-auto	FRL-2-1/2
2	G 1/2"	2500 l/min	46 cm ³	Auto	FRL-2-1/2-A
3	G 3/4"	4300 l/min	89,5 cm ³	Semi-auto	FRL-3-3/4
3	G 3/4"	4300 l/min	89,5 cm ³	Auto	FRL-3-3/4-A
3	G 1"	4300 l/min	89,5 cm ³	Semi-auto	FRL-3-1
3	G 1"	4300 l/min	89,5 cm ³	Auto	FRL-3-1-A

* Measured at p1=10 bar, p2=6 bar, Δp=1 bar according to CETOP RP 50P

